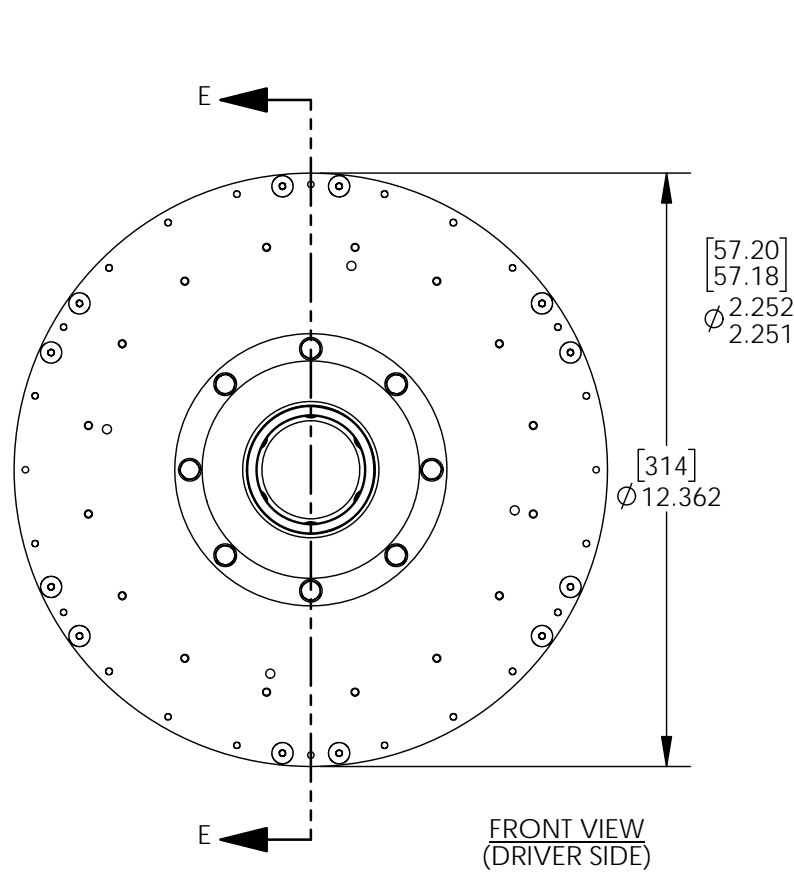


ITEM NO.	PART NO.	QTY.	DESCRIPTION	MANUFACTURER	MFR. PART NO.
1	SEE JOB ORDER	2	B-LOC SHRINK DISC	B-LOC CORP	
2	SCREW	8	SCREW, MOTOR SIDE, HHCS, M6x30		
3	SEE JOB ORDER	1	HUB, DRIVER SIDE, SYNCHRA 300 COUPLING		
4	SYNCHRA 300	1	SYNCHRA 300 CENTER MEMBER		
5	SCREW	6	SCREW, LOAD SIDE, HHCS, M6x60		
6	SEE JOB ORDER	1	HUB, LOAD SIDE, SYNCHRA 300 COUPLING		

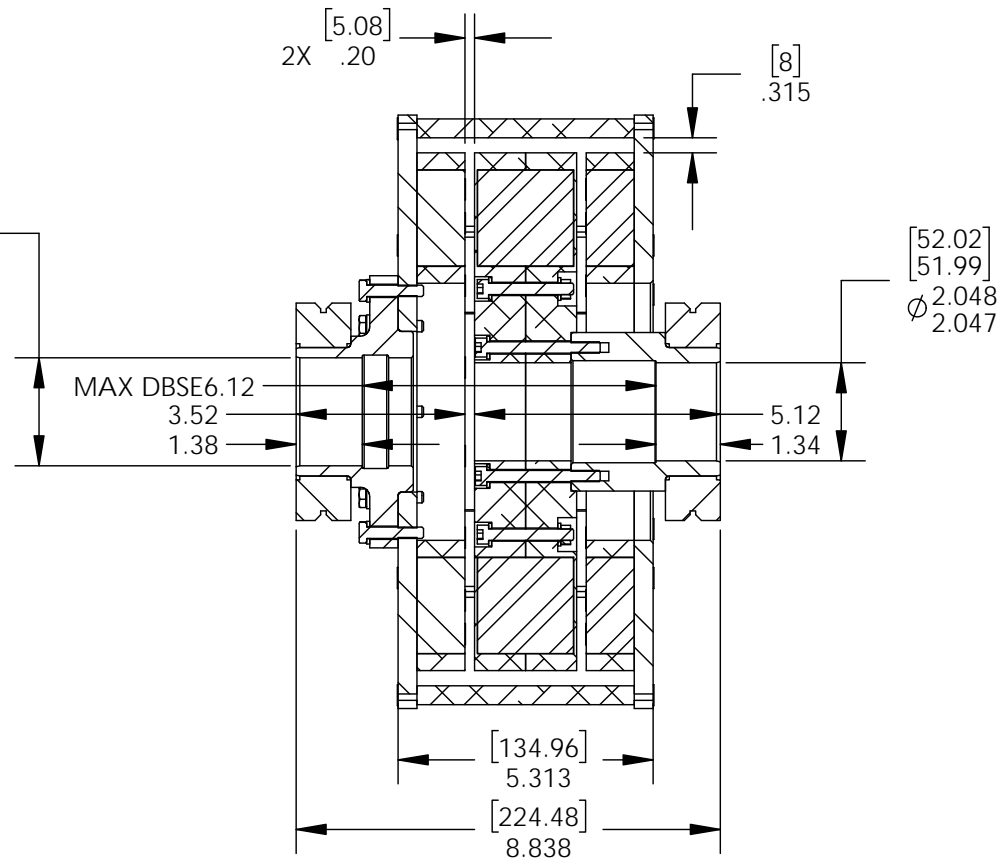
REVISIONS					
REV.	DESCRIPTION	DATE	DRAWN	DATE	APPROVED
0		3/5/18	JKL		

D
C
B
A

D
C
B
A



DRIVER END LOAD END



COUPLING DATA:

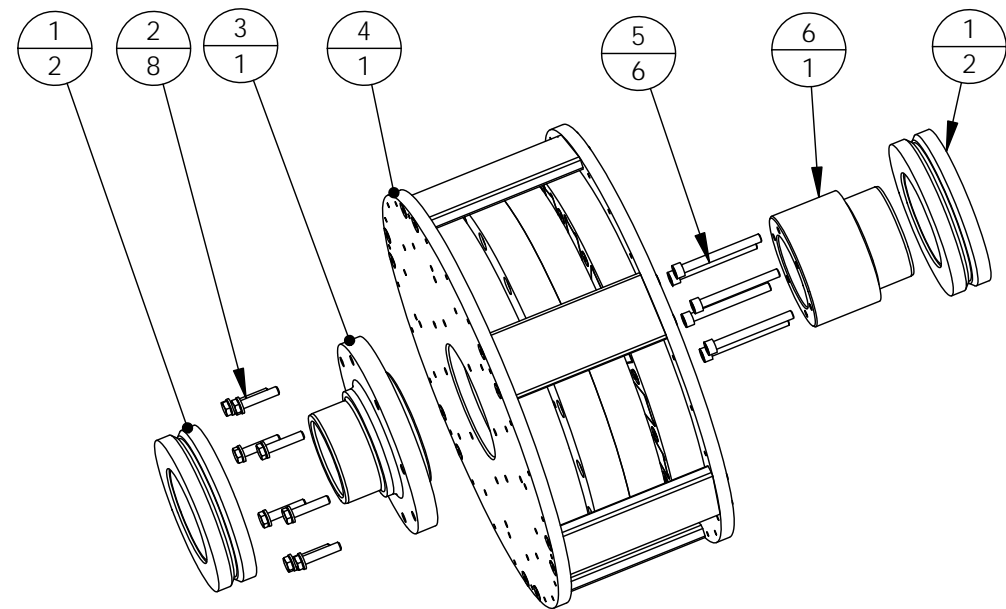
PEAK TORQUE	774 FT-LB
MINIMUM DBSE	0.25 inch (6.35 mm)
MAXIMUM DBSE	6.12 inch (155 mm)

APPLICATION DATA:

DRIVER EQUIPMENT	MOTOR
DRIVER POWER	362 hp (270 kW)
DRIVER SPEED	3540 rpm
DRIVER SHAFT DIAMETER	Ø2.250/2.249 inch (Ø57.150/57.125 mm)
LOAD EQUIPMENT	PUMP
LOAD SHAFT DIAMETER	Ø2.046/2.045 inch (Ø51.960/51.943 mm)

NOTES:

1. APPLY BLUE LOCTITE #242 OR #246 TO HUB FASTENERS
2. MAXIMUM DIAMETRICAL CLEARANCE BETWEEN SHAFT AND HUB BORE FOR SHAFT SIZES & SHRINK DISCS LISTED ABOVE: **.002" [.051mm]**



REFERENCE ONLY

THE TECHNICAL INFORMATION CONTAINED HEREIN IS CONSIDERED MAGNADRIIVE PROPRIETARY AND SHALL NOT BE USED, REPRODUCED, RELEASED OR DISCLOSED IN WHOLE OR IN PART WITHOUT PRIOR WRITTEN PERMISSION FROM MAGNADRIIVE CORP.

CAD GENERATED DRAWING, DO NOT MANUALLY UPDATE, DO NOT SCALE DRAWING		THIRD ANGLE PROJECTION		MagnaDrive CORPORATION www.magnadrive.com	
UNLESS OTHERWISE SPECIFIED DIMENSIONS ARE IN INCHES TOLERANCES ARE: DECIMALS ANGLES XXX ± .005 X ± 5° XX ± .010 X ± .030		DRAWN JKL	3/6/18	TITLE ASSY, TOP, SYNCHRA 300 COUPLING	
MATERIAL		CHECKED		DWG. NO. SYC-300	REV. 0
FINISH		APPROVED		SIZE B	MODEL SYNCHRA 300 COUPLING
		SCALE 3:16		CAD FILE:	EST. WEIGHT 95 LB
		SHEET 1 OF 1			